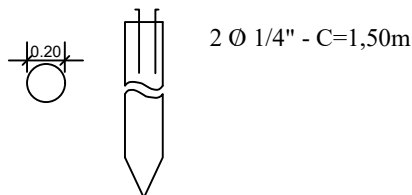
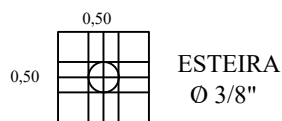


FUNDAÇÃO / ESTRUTURA

BLOCOS - H = 0,30m e BROCAS

QUANT.: 20 - 01 BROCA

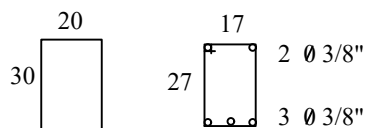
BROCAS - 8" (20CM) - PROF.: 3,00m



V. BALDRAMES

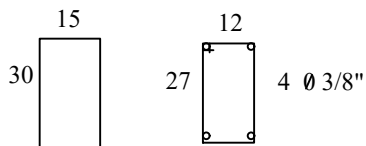
ESTRIBO A CADA 15CM Ø 3/16" - C=0,98m

VB01 = 4,15
VB02 = 2,05
VB03 = 3,60
VB04 = 1,80
VB05 = 1,80
VB06 = 1,00

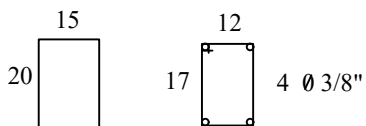


PILARES

ESTRIBO A CADA 15CM Ø 3/16" - 0,88m
P01;P02 (h=3,00m)



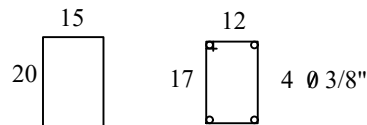
ESTRIBO A CADA 15CM Ø 3/16" - 0,68m
P03;P04 (h=3,00m)
P05 (h=2,30m)
P06 (h=2,40m)
P07 (h=3,60m)



VIGAS RESPALDO

ESTRIBO A CADA 15CM Ø 3/16"

V01 = 3,60
V02 = 1,80
V03 = 1,80 (2X)
V04 = 1,00 (3X)



PROP.: PREFEITURA MUNICIPAL

FOLHA 01

LOCAL: MURO FRONTAL - SALA DE VACINA

EDIONE S. FERREIRA
CAU A19.326-7